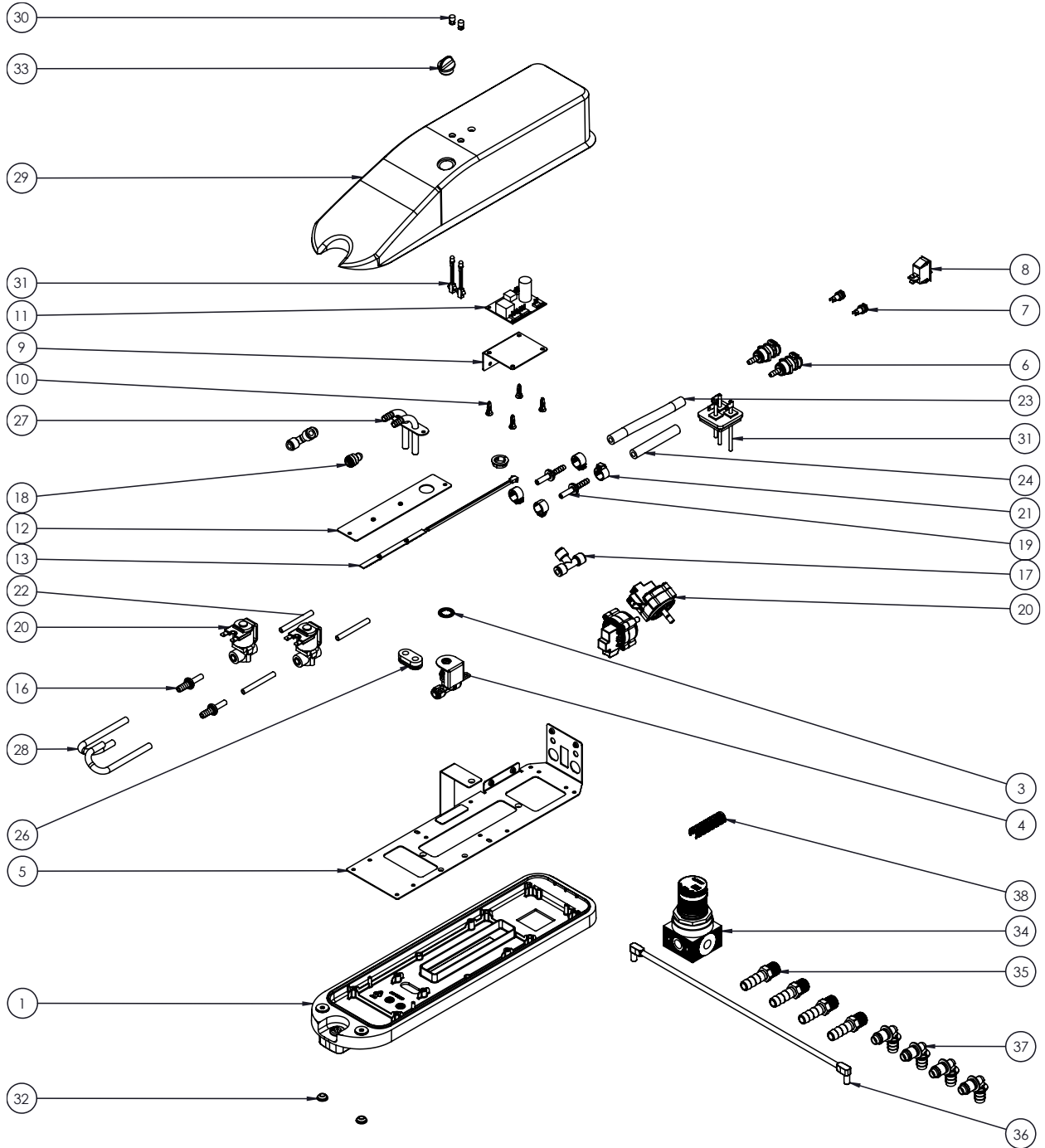


# CRATHCO Part Diagram and List

## Liquid Autofill Simplicity



# Part List

## Liquid Autofill Simplicity

Item	Description	Autofill Simplicity AFS-P2-16, AFS-P4-16		Autofill Simplicity AFS-P2-22, AFS-P4-22	
		Part No.	INT. CODE	Part No.	INT. CODE
<b>BASE ASSEMBLY PARTS</b>					
1	Cover Base Autofill assembly	231-01611	0GMKIS	231-01611	0GMKIS
2	Weldment Controller Bracket	200-02107	0GMK20	200-02107	0GMK20
3	WASHER, INTERAL-TOOTH, M12 SUS	352-00022	0GMK5D	352-00022	0GMK5D
4	Bracket Reducing Valve	200-02143	0GMK1H	200-02143	0GMK1H
5	Reducing valve ABCUC 0404	310-00047	0GMKIQ	310-00047	0GMKIQ
6	1/4" Hose Barb Valved Panel Mount Coupling Body	359-00251	0GMJY4	359-00251	0GMJY4
7	DC Socket connector, 12V 5A	343-00471	0GMJXO	343-00471	0GMJXO
8	On-Off Switch Rocker (Switch)	3373	0GM21D	3373	0GM21D
9	Bracket PCBA Controller	200-02116	0GMK1F	200-02116	0GMK1F
10	Standoff Dia. 4.0 X 6.4 mm.	354-00048	0GMJY1	354-00048	0GMJY1
11	Water level control, Autofill	349-00103	0GMJXX	349-00103	0GMJXX
12	Bracket LED Lighting	200-02108	0GMK1D	200-02108	0GMK1D
13	LED strip rigid, 12V 0.3W	345-00064	0GMK2I	345-00064	0GMK2I
14	OPEN BUSHING 19mm. (PGSA-1519A)	300-00001	0GMJXG	300-00001	0GMJXG
15	Shut off valve, 12VAC/DC	280-00111	0GMJXC	280-00111	0GMJXC
16	Tube Barb Connector, Stem 1/4 x 5/16 barb	359-00154	0GMJY3	359-00154	0GMJY3
17	Tee Union PTU 1/4"	310-00043	0GMJXK	310-00043	0GMJXK
18	Tube Elbow Union 1/4"	310-00044	0GMJXL	310-00044	0GMJXL
19	Tube Barb Connector, STEM OD. 1/4", Hose ID. 1/4"	359-00254	0GMJY5	359-00254	0GMJY5
20	Low Pressure Switch SWI-L 1130	321-00039	0GMJXN	321-00039	0GMJXN
21	Single Ear Clamp SS. 12.0-14.5mm. 1/4" Hose	354-00049	0GMJY2	354-00049	0GMJY2
22	PE Tube, OD 1/4"xID 0.165	362-00248	0GM1JJ	362-00248	0GM1JJ
23	Tube High Pressure ID 6.35mm, OD 12.7mm	362-00287	0GMJY6	362-00287	0GMJY6
24	Tube High Pressure ID 6.35mm, OD 12.7mm	362-00300	0GMK1Y	362-00300	0GMK1Y
25	Level Probe Grommet for Overmold	290-00215	0GMKIL	290-00215	0GMKIL
26	GROMMET, OUTLET PIPE	290-00212	0GMK1M	290-00212	0GMK1M
27	Weldment Outlet Tube	200-02135	0GMK1G	200-02135	0GMK1G
28	TUBING-3/16ID X 5/16OD SILICON	362-00299	0GMK1X	362-00299	0GMK1X
29	Top Cover, Autofill	210-00956	0GMK1J	210-00956	0GMK1J
30	LENS LED OD. 5mm., Red Color	345-00065	0GMJXU	345-00065	0GMJXU
31	LED lighting, 12V, OD.5.0mm.	345-00063	0GMJXT	345-00063	0GMJXT
32	Grommet plugs silicone	73311	0GM3DU	73311	0GM3DU
33	Grommet Top Cover	290-00217	0GMK1P	290-00217	0GMK1P
34	Water regulator	310-00035	0GMJXH	310-00035	0GMJXH
35	Fit Quick Thread to Tube Straight Fitting 1/2" NPT to 3/8" Hos	310-00046	0GMJXM	310-00046	0GMJXM
36	Jack power cable	343-00472	0GMJXP	343-00472	0GMJXP
37	3/8 HOSE BARB NON-VALVED ELBOW COUPLING INSERT	359-00165	0GM1JC	359-00165	0GM1JC
38	Locking Clip 1/4"	210-00982	0GMJXB	210-00982	0GMJXB
39	AC/AC power supply, 120V input, 12VAC output	346-00107	0GMJXV		
40	AC/AC power supply, 230V input, 12VAC output			346-00108	0GMJXW

Electrolux Professional Inc

88 Armory Rd, Vicksburg, MS 29183 USA

Phone: 502.425.4776 Toll Free: 800.695.4500

Fax: Grindmaster.com Email: [csmailbox@electroluxprofessional.com](mailto:csmailbox@electroluxprofessional.com)

©2024 Electrolux Professional

Printed in Thailand

11/24

Part# 390-00349

